

Performance Blue Providers

ADAMS

- Gettysburg Hospital

ALLEGHENY

- Allegheny General Hospital
- Allegheny Valley Hospital
- AHN Brentwood Neighborhood Hospital
- AHN McCandless Neighborhood Hospital
- Forbes Hospital
- Heritage Valley Kennedy
- Heritage Valley Sewickley
- Jefferson Hospital
- St. Clair Memorial Hospital
- UPMC Children's Hospital of Pittsburgh
- UPMC Western Psychiatric Hospital
- West Penn Hospital

ARMSTRONG

- Armstrong County Memorial Hospital

BEAVER

- Heritage Valley Beaver

BEDFORD

- UPMC Bedford Memorial Hospital

BERKS

- Penn State Health St. Joseph

BLAIR

- Conemaugh Nason Medical Center
- UPMC Altoona

BRADFORD

- Guthrie Towanda Memorial Hospital
- Robert Packer Hospital
- Troy Community Hospital

BUTLER

- Butler Memorial Hospital

CAMBRIA

- Conemaugh Memorial Medical Center
- Conemaugh Miners Medical Center

CENTRE

- Mount Nittany Medical Center

CLARION

- Clarion Hospital

CLEARFIELD

- Penn Highlands Clearfield
- Penn Highlands DuBois

CLINTON

- Bucktail Medical Center
- UPMC Lock Haven

COLUMBIA

- Berwick Hospital Center

CRAWFORD

- Meadville Medical Center
- Titusville Area Hospital
- Vernon Place
- Yolanda G. Barco Oncology Institute

CUMBERLAND

- Holy Spirit Hospital

DAUPHIN

- Milton S Hershey Medical Center

ELK

- Penn Highlands Elk

ERIE

- Corry Memorial Hospital
- Millcreek Community Hospital
- Saint Vincent Hospital

FAYETTE

- Highlands Hospital
- Uniontown Hospital

FRANKLIN

- WellSpan Chambersburg Hospital
- WellSpan Waynesboro Hospital

FULTON

- Fulton County Medical Center

GREENE

- Washington Health System Greene

HUNTINGDON

- Penn Highlands Huntingdon

INDIANA

- Indiana Regional Medical Center

But wait, that's not all.

Performance Blue Providers (continued)

JEFFERSON

- Penn Highlands Brookville
- Punxsutawney Area Hospital

LACKAWANNA

- Moses Taylor Hospital
- Regional Hospital of Scranton

LANCASTER

- Lancaster General Hospital
- Lancaster General Women and Babies Hospital
- Wellspan Ephrata Community Hospital

LAWRENCE

- UPMC Jameson

LEBANON

- The Good Samaritan Hospital

LEHIGH

- Lehigh Valley Hospital - Coordinated Health Allentown
- Lehigh Valley Hospital - 17th Street

LUZERNE

- Lehigh Valley Hospital-Hazleton
- Wilkes Barre General Hospital

LYCOMING

- Divine Providence Hospital
- Geisinger Jersey Shore Hospital
- UPMC Muncy
- UPMC Williamsport

MCKEAN

- Bradford Regional Medical Center
- UPMC Kane

MERCER

- Edgewood Surgical Hospital
- Grove City Medical Center
- Sharon Regional Medical Center
- UPMC Horizon

MIFFLIN

- Geisinger - Lewistown Hospital

MONROE

- Lehigh Valley Hospital-Pocono

NORTHAMPTON

- Lehigh Valley Hospital - Coordinated Health Bethlehem
- Lehigh Valley Hospital Muhlenberg

NORTHUMBERLAND

- UPMC Sunbury

POTTER

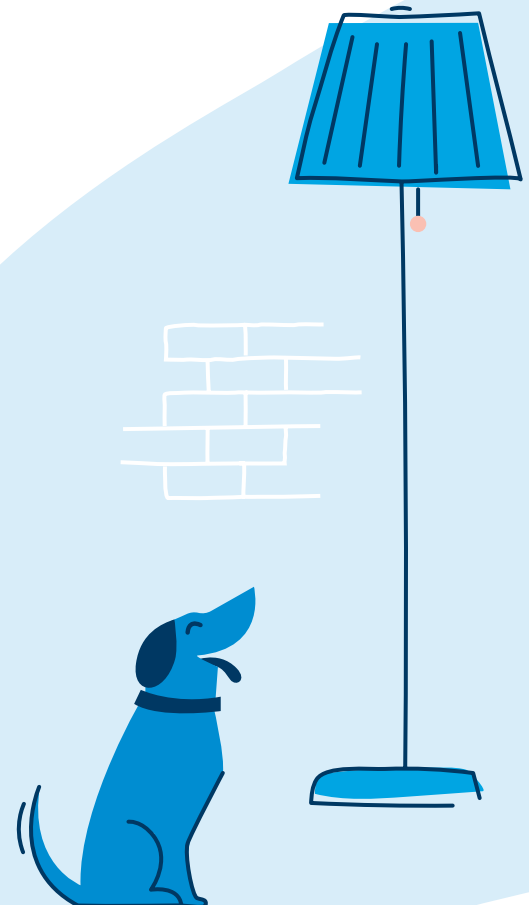
- UPMC Cole

SCHUYLKILL

- Lehigh Valley Hospital - Schuylkill

SOMERSET

- Conemaugh Meyersdale Medical Center, LLC
- UPMC Somerset



Performance Blue Providers (continued)

SUSQUEHANNA

- Barnes Kasson County Hospital
- Endless Mountain Health System

TIOGA

- UPMC Wellsboro

UNION

- Evangelical Community Hospital

VENANGO

- UPMC Northwest

WARREN

- Warren General Hospital

WASHINGTON

- Advanced Surgical Hospital
- Canonsburg Hospital
- Monongahela Valley Hospital, Inc.
- The Washington Hospital
- The Washington Hospital Children's Therapy

WAYNE

- Wayne Memorial Hospital

WESTMORELAND

- AHN Hempfield Neighborhood Hospital
- Excelsa Health Latrobe Hospital
- Excelsa Health Frick Hospital
- Excelsa Health Westmoreland Hospital

WYOMING

- Tyler Memorial Hospital

YORK

- OSS Orthopaedic Hospital
- WellSpan Surgery and Rehabilitation Hospital
- York Hospital

